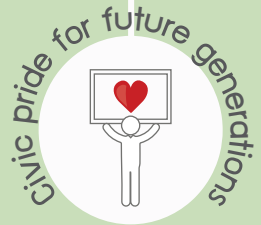


PROJECT FOR PROMOTING SUSTAINABILITY IN FUTURE CITY OF THAILAND

SFC CONCEPT



SUSTAINABLE FUTURE CITY INITIATIVE (SFCI)

The National Economic and Social Development Board (NESDB) and the Japan International Cooperation Agency (JICA) started The Project for Promoting Sustainability in Future Cities of Thailand (TFCP) in August 2015 to promote sustainable urban development of local cities of Thailand. Together with NESDB and JICA, the TFCP Team established the Sustainable Future City (SFC) development concept and proposed the Sustainable Future City Initiative (SFCI) as a national government-guided and local-government-driven mechanism to realize the SFC. To examine the SFCI, six model cities were selected to prepare their respective SFC plans and implement SFC projects.



PHANAT NIKHOM TOWN MUNICIPALITY

Phanat Nikhom Town Municipality is a small town in Chonburi province. Located at about 103 km southeast of Bangkok and about 30 km northeast of Chonburi City, Phanat Nikhom City has an area of about 2.76 sq km and is a center of urbanized area of about 45 sq km. With a number of factories and industries located in this urbanized area as a result of a comprehensive zoning plan, Phanat Nikhom has good transportation access and a developed logistics service. While the town's registered population has steadily declined—it is now only about 10,800 as of 2015—its aged population has considerably grown in the last decade.

For visitors, what readily stands out is the exceptional quality of its handwoven baskets and other local traditional products which the people of Phanat Nikhom has created. Phanat Nikhom Town is also famous for sustainably managing their natural environment and promoting public participation.

SUSTAINABILITY ASSESSMENT

Younger generations keep decreasing due to insufficient job opportunities in the area.

The proximity of the industrial zone could attract workers into the town; providing accommodations and other services .

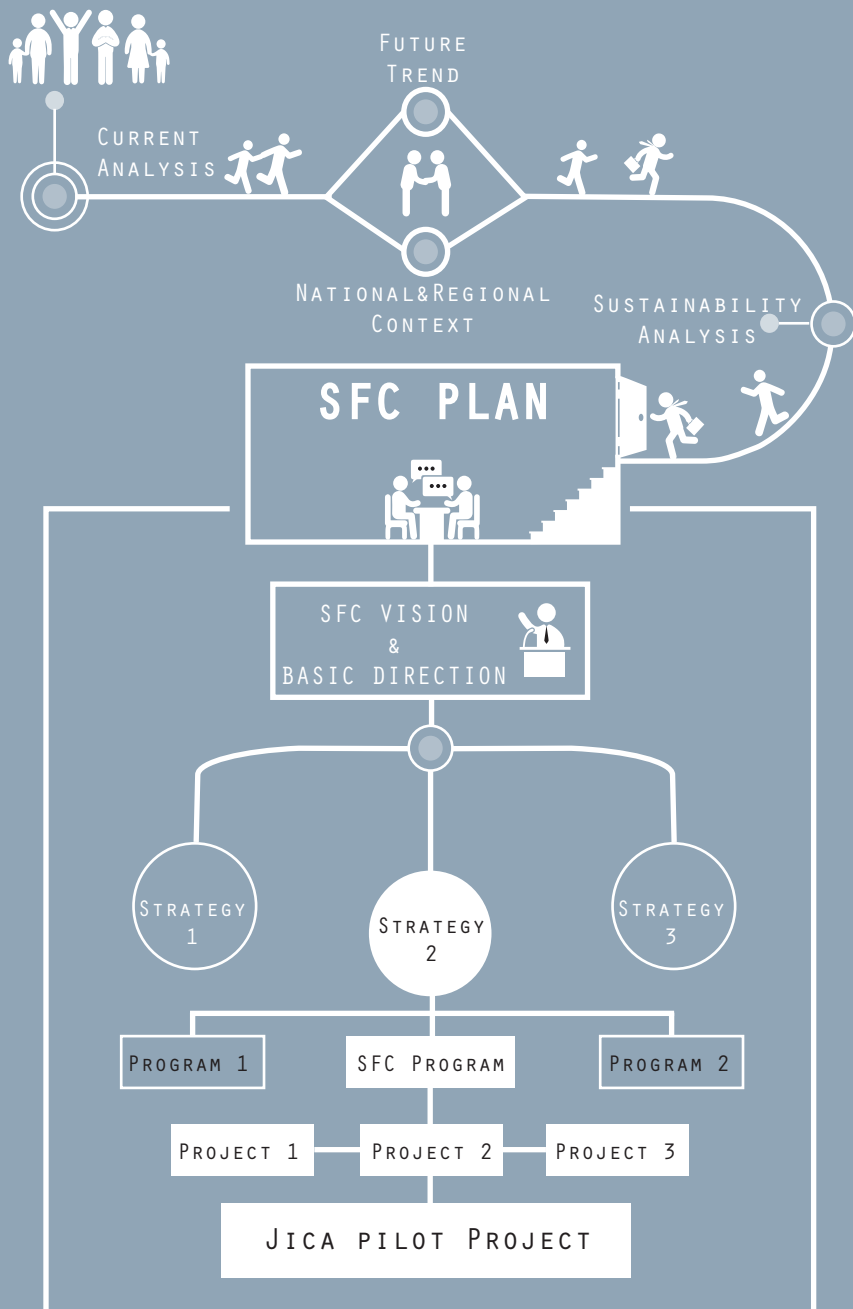
Existing local resources such as craft production should be improved to protect and promote the uniqueness of the town.

The living environment in Phanat Nikhom is comparatively better than other cities of Thailand; however, public facilities need improvement to give access to all members of society.

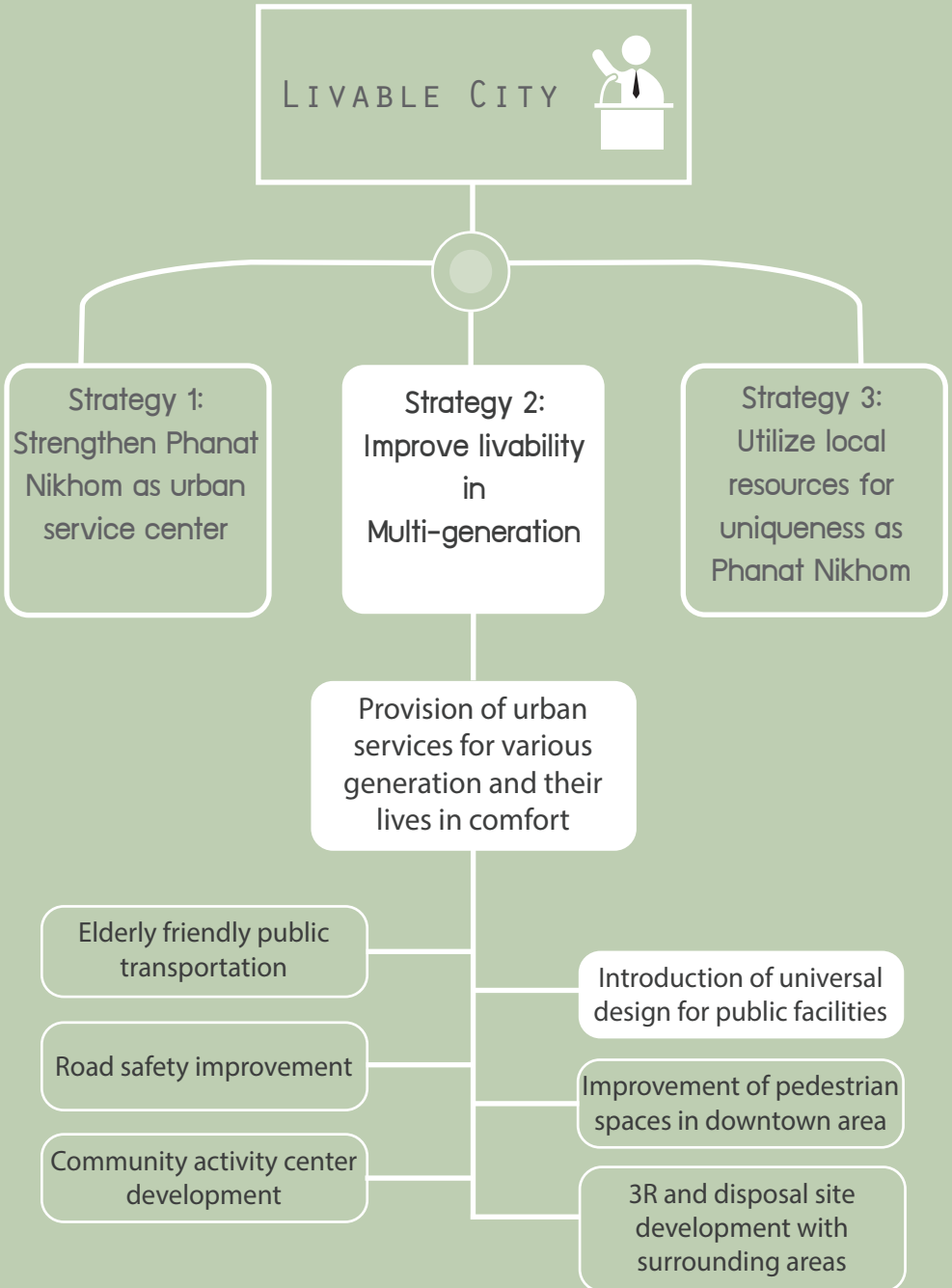


SFCI IMPLEMENTATION FRAMEWORK

Start _ _ _ _ _



SFC PLAN



JICA PILOT PROJECT

Project to introduce universal design in Phanat Nikhom:

To develop universal design guidelines for Phanat Nikhom



To develop a “long-term strategies” to introduce a universal design in Phanat Nikhom and to identify “required projects”

To implement priority projects



OUTCOME AND IMPACT

Expected output of SFC Program

- Guidelines on universal design of infrastructure, building, equipment, and information dissemination
- Diagnostic map showing locations of problems as identified through work shops/ interview surveys
- Long-term strategy and project list
- Implementation of priority projects



Long-term impact of SFC Plan

- Sustainable and livable city for all ages.
- To provide similar cities with aging populations lessons on comprehensive strategies on universal design



The Project for Promoting Sustainability in Future Cities of Thailand



Project office
Office of the National Economic and
Social Development Board [NESDB]
Email: tfcp.mail@gmail.com
Tel: +66-2-628-2879

Phanatnikhom Town Municipality
Tel: 0-3878-7947-8 to 102
website: www.phanatnikhomcity.go.th